



BCL School Attendance Team

*Experts In Pupil Welfare*

# School Attendance Support

"Raising Pupil Attendance & Reducing Persistent Absence"



BCL School Attendance Team

*Experts In Pupil Welfare*

---

## Our Story...

BCL was founded in 2013 to provide specialist Attendance & Welfare support to schools to empower the quality of education for young people. BCL is a diverse and rapidly growing educational company with a sole aim to provide additional capacity to narrow the gap and reach the highest possible outcomes for young people, schools, academies and trusts.

'We believe that every young person deserves the best education and life chances. I formed BCL with a vision and passion to positively impact the lives of young people, our schools and families by developing an educational platform that encompass outstanding educational support services through highly experienced and dedicated professionals.'

Ben Lewis  
Chief Executive Officer



BCL School Attendance Team

*Experts In Pupil Welfare*

## Service Offerings

### Pupil Interventions



- Safe & Well Checks
- Panel Meetings
- Late Gates
- Targeted Support

### Whole School Support



- Rapid Action Plan
- Systems & Processes
- Policies
- Staff CPD
- OFSTED Preparation

### Data Analysis



- Weekly Attendance Tracker
- Half Termly Data Pack
- Pupil Attendance Reports





BCL School Attendance Team

*Experts In Pupil Welfare*

## Pupil Interventions



### Home Visits

- Establish Reason For Absence / Barriers to Learning
- Attendance Officers DSL Trained
- Feedback Sent Directly to You in Real-Time
- Calendar Year Not Academic Year
- Weekend Visits
- Discuss Patterns and Trends



### Parental Support

- Parental Drop Ins
- Parental Workshops
- Telephone / Text Support
- External Agencies



### First day calling

- Telephone Calls Made From Multiple Numbers With Same Area Code.
- Highly Trained Attendance Officers Who Will Act on Behalf of Your Setting
- In-depth and Targeted Approach



### Late Gates AM & PM

- Meet, Greet and Challenge
- Intercept Hard to Reach Parents at the End of the Day



### Casework

- Identifying and understanding the barriers preventing good attendance.
- Setting up and Leading Attendance Meetings
- Developing in School Reasonable Adjustments.
- Completion of Referrals to LA and Other Services Inc. EH Assessments

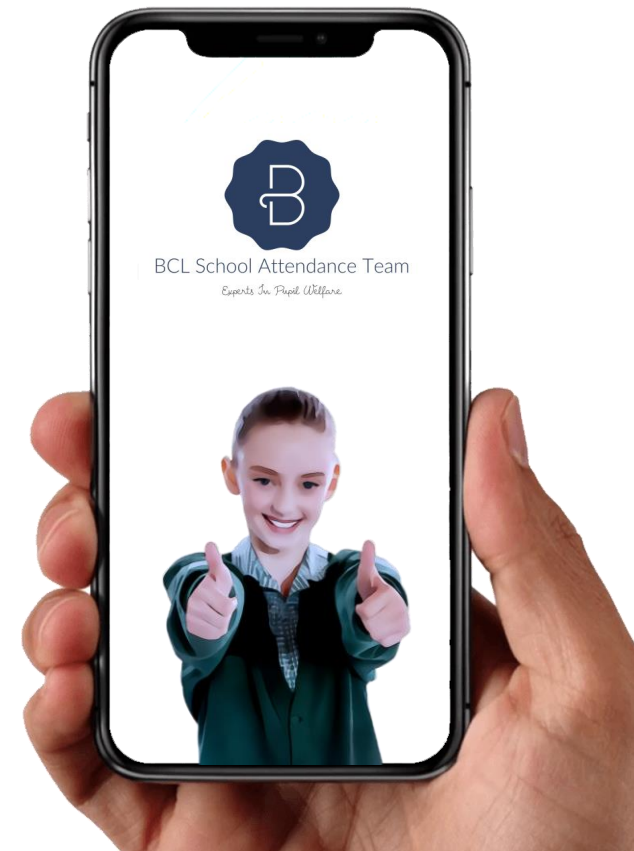


BCL School Attendance Team

*Experts In Pupil Welfare*

## Logging a Pupil Intervention

- Your designated staff will receive real-time updates from interventions carried out by our team.
- A half termly overview will be sent listing all interventions that have been carried out. This enables to look at patterns and trends and overall impact.
- All communication is fully encrypted and GDPR compliant.







## BCL School Attendance Team

*Experts In Pupil Welfare*

---

*I wanted to take a moment to express my deepest gratitude for all the hard work and dedication you have put into helping me and my grandson during this challenging time. Your efforts to re-engage him back into school have not gone unnoticed, and I am truly grateful for all that you have done.*

*Your ability to liaise with the school and provide the necessary support has been invaluable in ensuring that my grandson is now back in school and fully engaged in his education. Your unwavering commitment to his success has truly made a difference, and I cannot thank you enough for all that you have done.*

*Thanks to your efforts, my grandson has been able to attend school consistently and has achieved a 100% attendance record in the last half term.*

*This is a testament to your hard work, dedication, and genuine care for his wellbeing and academic success.*

*I am so grateful to have you as our attendance officer, and I want to express my heartfelt thanks for all that you do. Your support has made a significant impact on my grandson's life, and I am truly appreciative of everything you have done.*

*Thank you once again for everything.*

*Grandparent of a Year 5 Pupil in Leeds (2023-24)*



## Attendance Data



### Weekly Attendance Tracker

- Unauthorised / Authorised Days.
- In-year Transfers
- Educational Need



### Half Termly Data Pack

- Headline Figures
- Focus Group's
- Coding
- Days of the week
- Comparatives Against Local Regional and National



### Pupil Attendance Reports

- Day's Not Percentages
- Visual
- Half Termly
- Example To Follow



### Rapid Action Plan

- Action Plan For All Stake Holders.
- Regular Review Of Policy



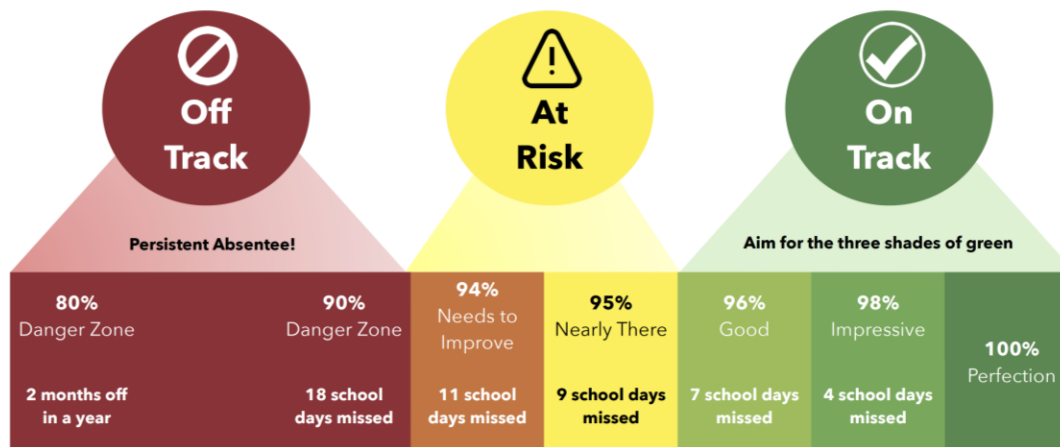


BCL School Attendance Team

*Experts In Pupil Welfare*

## EXAMPLE OF OUR HALF TERMLY PUPIL REPORT

Pupil Name: \_\_\_\_\_ Class: \_\_\_\_\_ Year Group: \_\_\_\_\_



PUPIL NAME is currently STATUS. The breakdown of PUPIL NAMES attendance this academic year can be seen below.

Last Year's Attendance	Current Attendance	Authorised Days Missed	Unauthorised Days Missed	Total School Days Missed	Number of Lates	Minutes Late to School

For every day PUPIL NAME is absent from school, **over 6 hours** of valuable education time is lost.





## BCL School Attendance Team

*Experts In Pupil Welfare*

---

*The attendance of pupils is a high priority for all schools and is an area that has previously provided challenge for our school. Working with BCL has removed the pressure and additional time needed by school staff to monitor and make an impact on our attendance data. Home visits are carried out in a much more timely and effective manner, and we have seen an improvement in pupils' punctuality.*

*Due to the data that BCL provide us with, we can regularly keep our families informed of their children's attendance and punctuality and provide support where it is needed. BCL are a great team, they provide a supportive, efficient and effective service and enable schools to make Attendance a high priority without the additional stress.*

Jo Mercer  
Head Teacher  
Five Lanes Primary School



BCL School Attendance Team

*Experts In Pupil Welfare*

CONTACT US



0333 042 8144



info@bcl-consultancy.co.uk



www.bcl-consultancy.co.uk

Capture our QR Code

